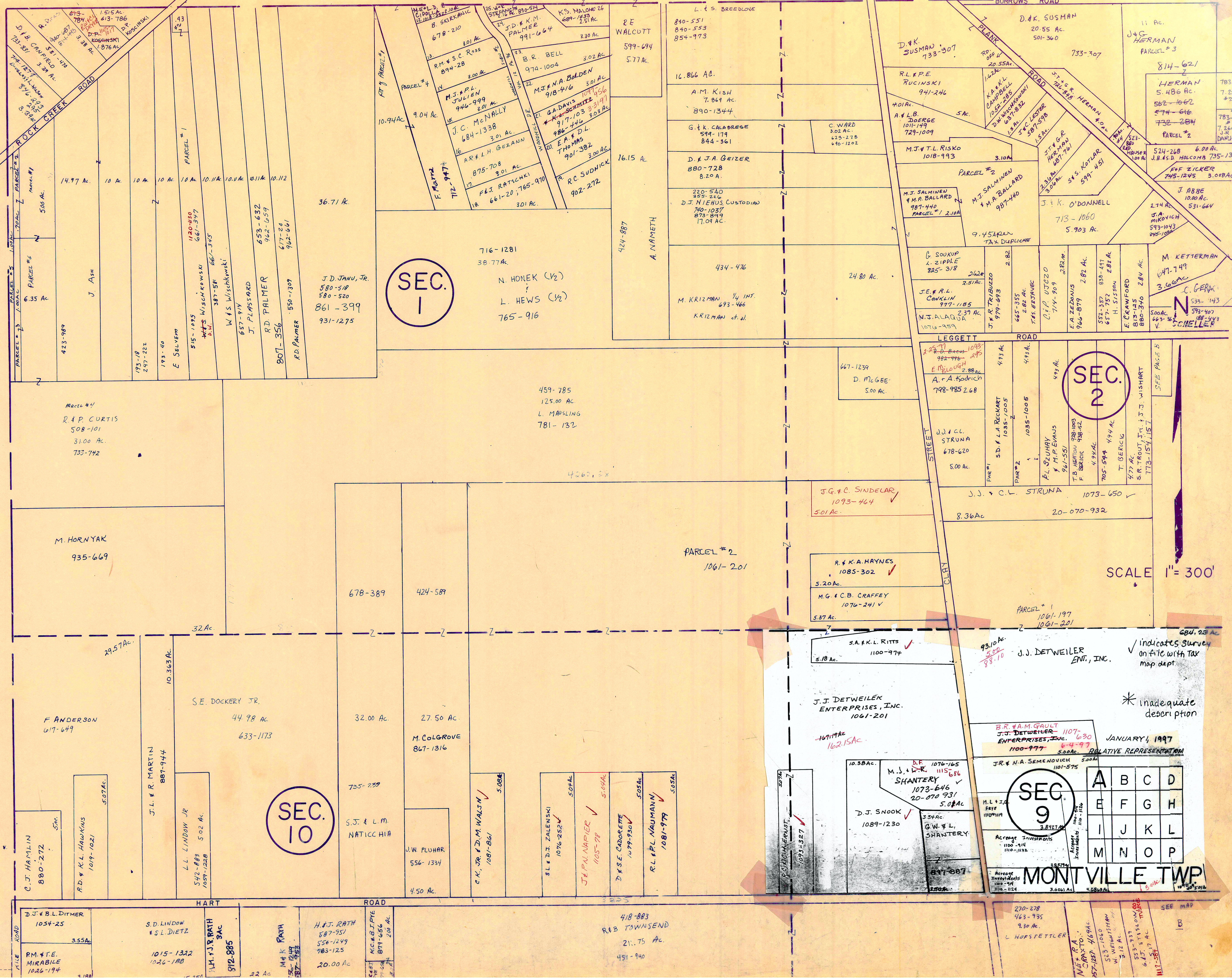


H A M B D E N T O W N S H I P

T H O M P S O N T O W N S H I P



SEC. 1

SEC. 2

SEC. 10

SEC. 9

A	B	C	D
E	F	G	H
I	J	K	L
M	N	O	P

MONTVILLE TWP

SCALE 1" = 300'

JANUARY, 1997

RELATIVE REPRESENTATION

* indicates survey on file with tax map dept.

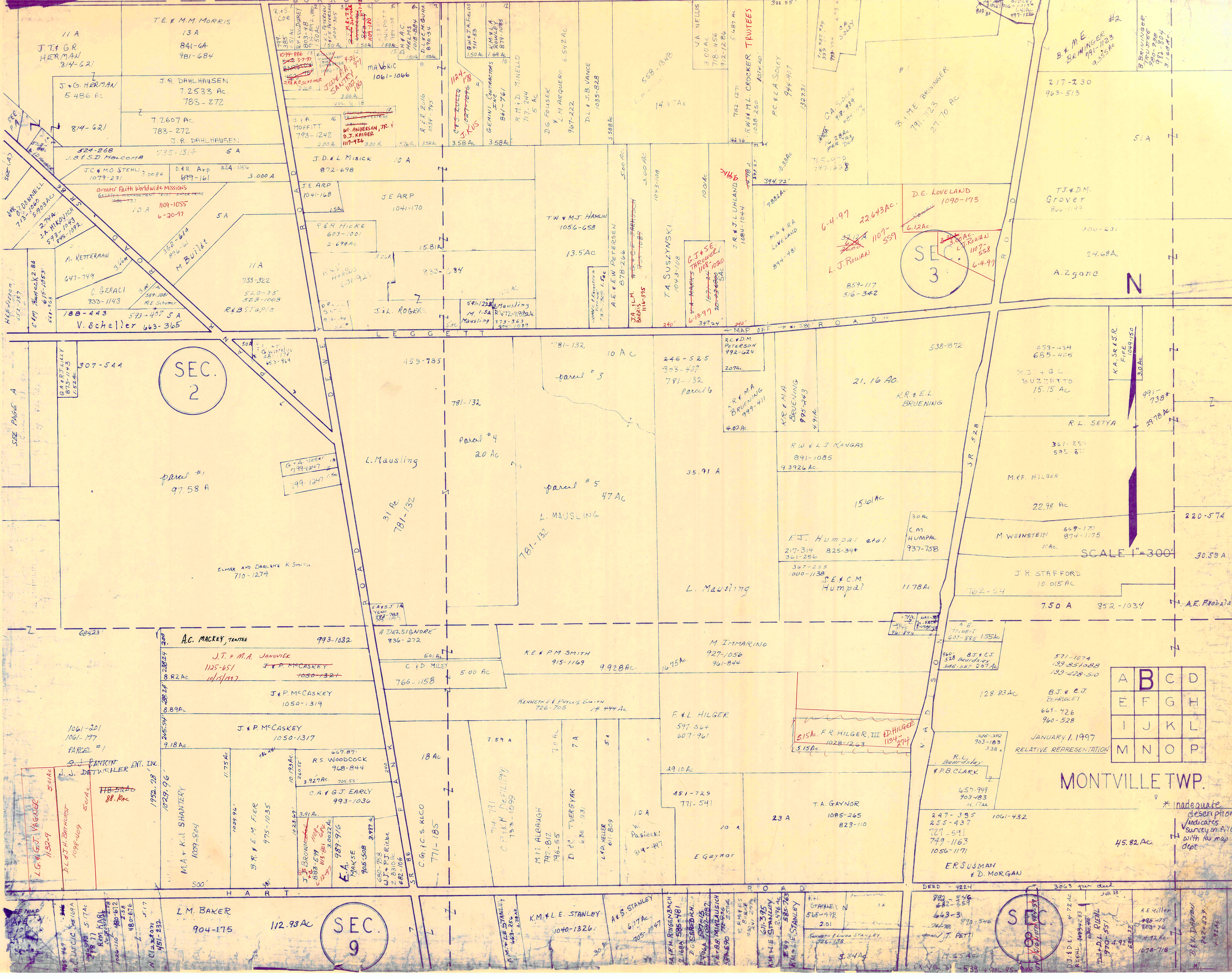
* inadequate description

0591 0591 000C 000C

MATCH LINE

SEE MAP

T H O M P S O N T I O W N S H I P



SEC. 2

SEC. 3

SEC. 9

MONTVILLE TWP.

A	B	C	D
E	F	G	H
I	J	K	L
M	N	O	P

JANUARY 1, 1997
RELATIVE REPRESENTATION

* inadequate description indicates survey on file with tax map dept.

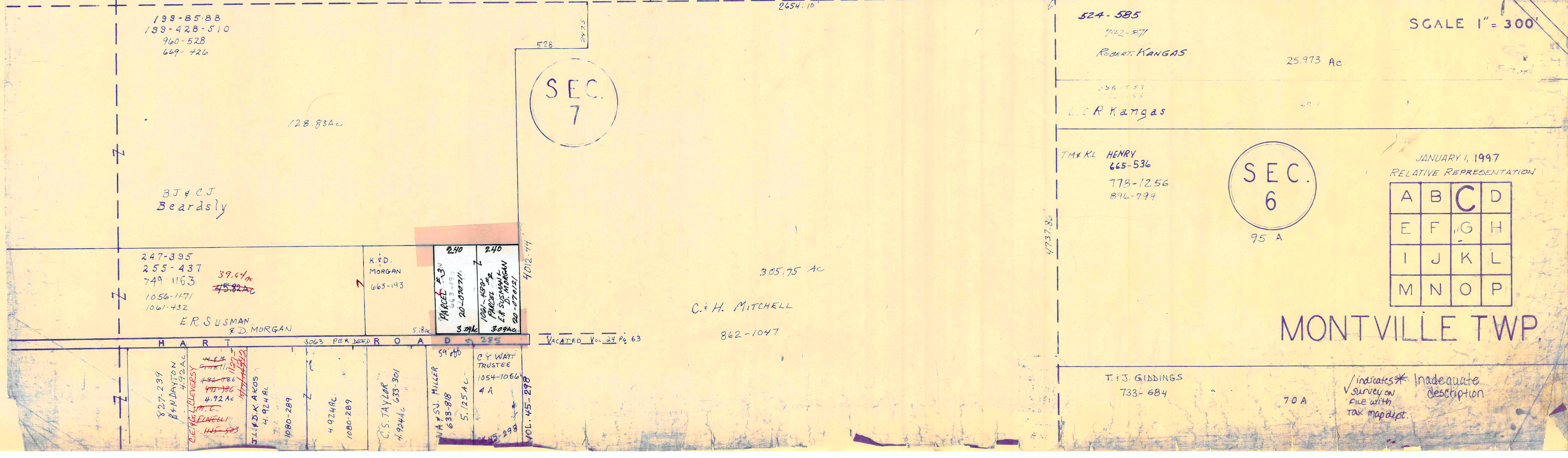
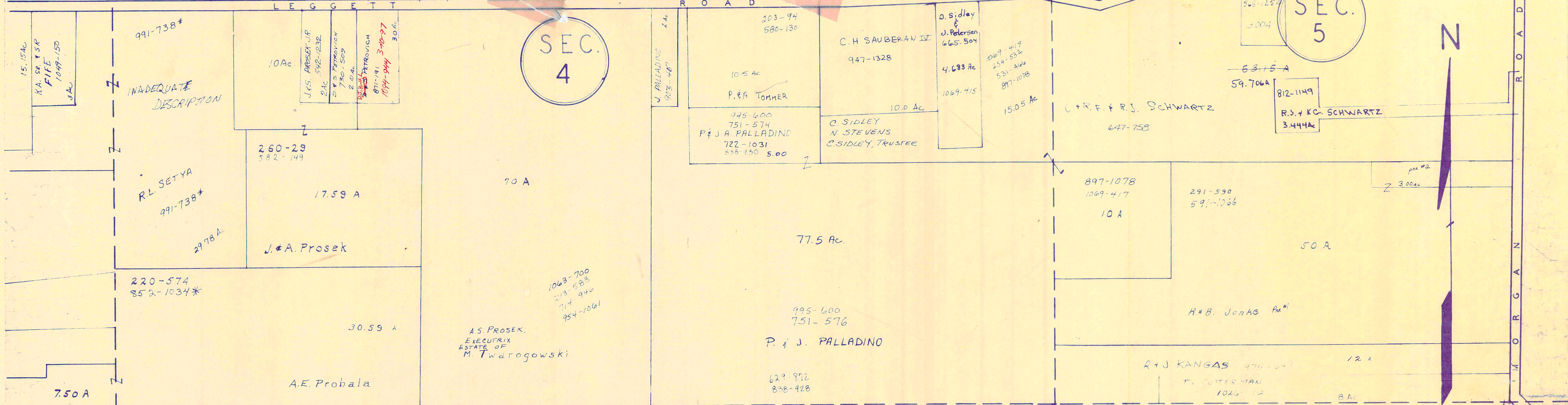
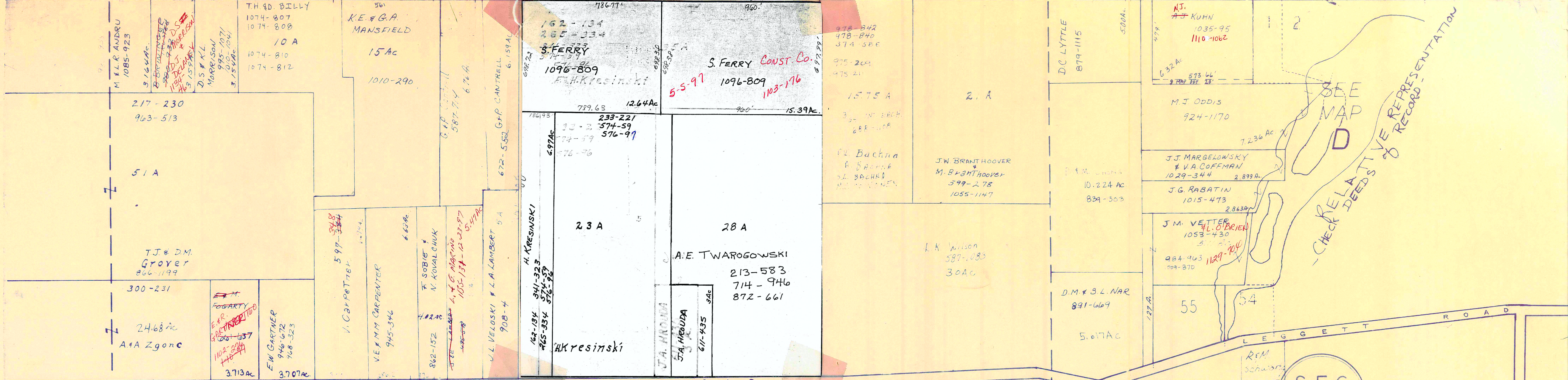
SCALE 1"=300'

SEE MAP AT...
 A.C. DUCIC 5.17 AC
 R.M. HART 5.17 AC
 1085-110 480-612 2.58
 180-618
 N.O.L. 4.17
 451-232

L.M. BAKER
 904-175
 112.93 AC

DEED - 4224
 892 546
 682-559
 643-3
 7498
 870-546
 J. PETT
 4.65 AC
 1078-718

A.E. Miller
 445-75
 808-76
 442 AC
 B.M. DUBOIS
 4.92 AC



SEC. 4

SEC. 7

SEC. 5

SEC. 6

SEE MAP D
CHECK RELATIVE REPRESENTATION

SCALE 1" = 300'

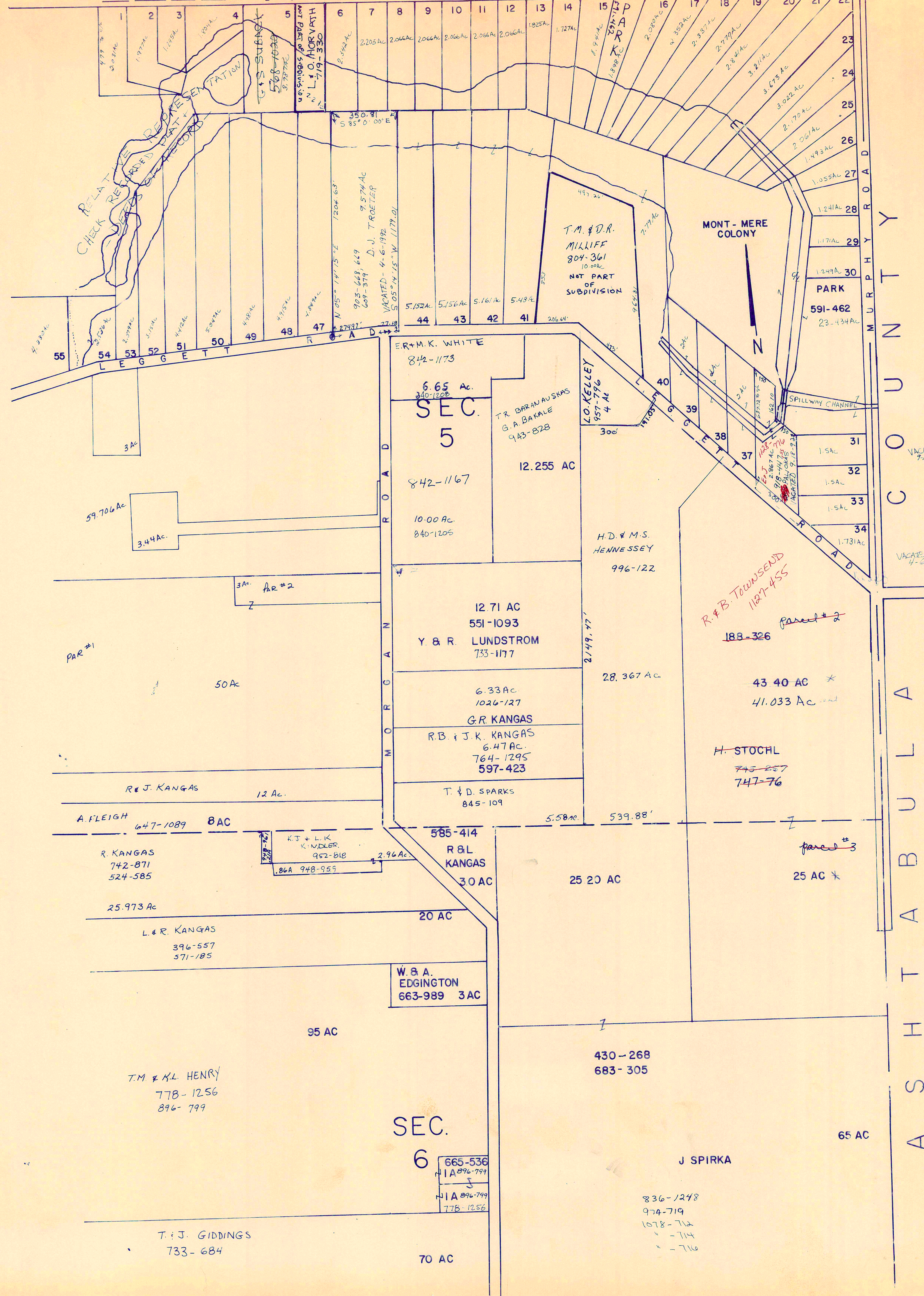
MONTVILLE TWP.

JANUARY 1, 1997
RELATIVE REPRESENTATION

A	B	C	D
E	F	G	H
I	J	K	L
M	N	O	P

Indicates * Inadequate description
Survey on file with tax map dept.

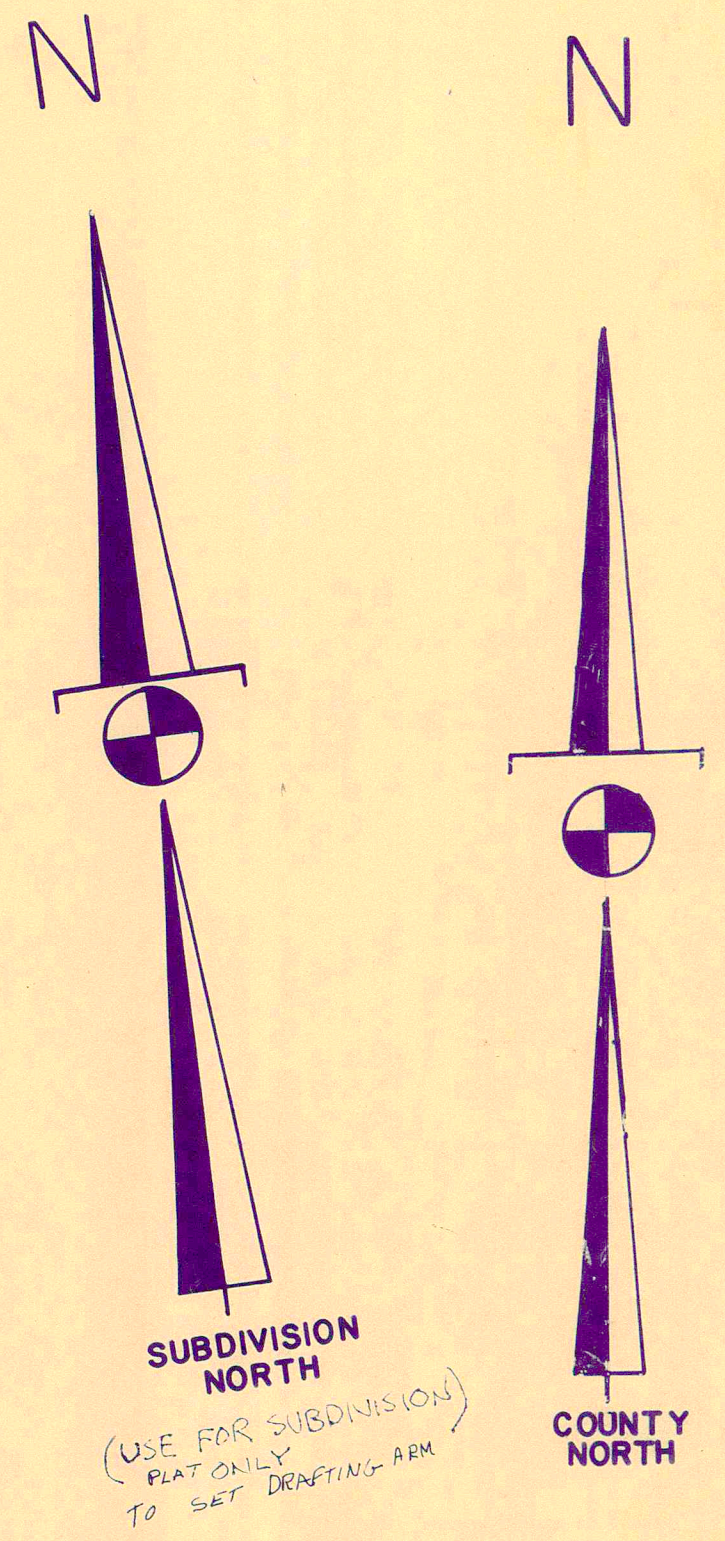
T H O M P S O N T O W N S H I P



MONT-MERE COLONY		
SUBDIVISION ONE - Vol. 9-Pg 96		
1	M.G. SHANK	1000-330
2	F.C. NICHOLS	837-402
3	J.R. KAYEY/ELCH	553-1007
4	T.R. MONROE	548-1020
5	T.D. J.A. HARTON	1020-84
6	R.S. HANKE	700-815
7	D.P. HANKE	762-156
8	J.J. J.A. POGHEN	763-633
9	E.L. DE MINICK	915-357
10	J.B. CUSACK/GER	576-466
11	F.J. WEAVER et al	1056-264
12	H.E. J.W.A.F. SPRINGER	1057-818
13	D. & G.B. UMBEL	868-59
14	N.J. KERMODE	867-378
15	J.D. SCOTT	552-819
16	J.W. McDOUGALL	789-1288
17	W.B. D.M. HART	841-295
18	A.B. UMBEL	581-1059
19	J.N. FIKERSON	821-1182
20	G.E.S. GRODDE	580-811
21	J.S. & K.E. BRIDGEMAN	998-185
22	E.A.M.L. BLANKENSHIP	1063-147
23	WARREN NICHMAN	729-484
24	P.D. & N.N. RONIS	953-10
25	J.J. SOLLERS	1047-1110
26	T.D. BRUNINGER	965-334
27	G. MORZESHOWSKI	653-1037
28	J.K. AMMOND	686-1058
29	U.A. & C.J. TERBAGI	857-1289
30	I.E. X. MEDVED	923-897
31	D. KINGSLAND	676-611
32	J.T. SCHWARTZ	865-11719
33	R.S. & C.A. LIPUS	812-1180
34	R. HAETER Eye Co	550-780
35	E.T. PALOMAS	647-367
36	E.W. & K.H. HUGGARD	962-123
37	J.F. KIGAYSKO	633-877
38	A.S. KIGAYSKO	633-415
39	L.F.M. BIXEL	823-1238
40	D.L. SCOTT	1054-1225
41	M.T. ZUPANCIC & D.L. SCOTT	1056-152
42	R. & M. KOP	734-1542
43	R.R. & S.T. TURNER	907-996
44	D. TROETER	607-327
45	" " "	" " "
46	" " "	" " "
47	T. & L. WILT	706-14
48	Y.P. Sritalapat	810-293
49	P.A. & L.H. CHAM	874-1177
50	R.A. & L.H. CHAM	887-1240
51	L.J. VAITKUS	1005-694
52	A. BURKE & L. DUBAN	383-267
53	J.P. PETERSON	757-297
54	J.A. & P.A. PETERSON	1049-787
55	L.C. & P.A. WILSON	621-1047

DH. (M.M. GRABINSKI 1120-355 9-5-97
S. Dunford & K. Pruitt 1109-96 6-16-97

PARCEL #1
PARCEL #2
PARCEL #3



SCALE: 1" = 300'

JAN. 1, 1997

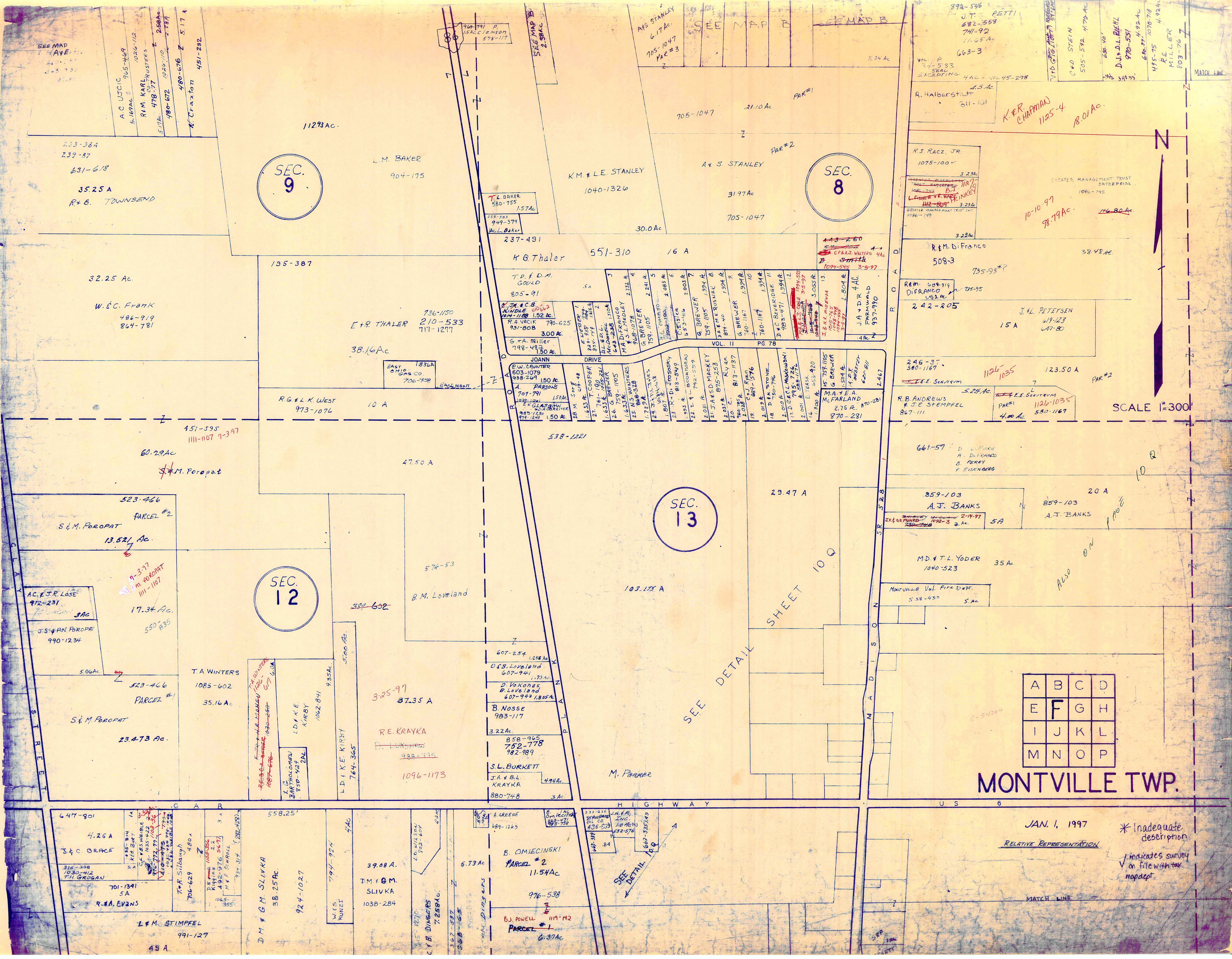
RELATIVE REPRESENTATION

✓ indicates survey on file with tax map dept.

* Inadequate description

A	B	C	D
E	F	G	H
I	J	K	L
M	N	O	P

MONTVILLE TWP.



SEC. 9

SEC. 8

SEC. 13

SEC. 12

MONTVILLE TWP.

A	B	C	D
E	F	G	H
I	J	K	L
M	N	O	P

JAN. 1, 1997
RELATIVE REPRESENTATION

* Inadequate description indicates survey on file with tax mapdept.

SEE MAP A & E
A.C. UJIC 965-469
S. 169 AC. 1026-112
R.F.M. KARL TRUSTEES
S. 17 AC. 478-377
1980-672 1225-110
2500 AC.
1980-676 Z 5.17 A
K. Craxton 451-282

233-384
239-37
631-618
35.25 A
R & B. TOWNSEND

32.25 Ac.
W. & C. FRANK
486-919
864-781

L.M. BAKER
904-175

E & R. THALER
736-1150
210-533
717-1277

R.G. & L.K. WEST
973-1076 10 A

60.29 AC
1111-1107 9-3-97
S & M. POROPAT

523-466
PARCEL #2
S & M. POROPAT
13.521 Ac.
9-3-97
S & M. POROPAT
1111-1107
17.34 Ac.
550-835
J.S. & P.N. POROPAT
990-1234
5.06 AC

523-466
PARCEL #1
S & M. POROPAT
23.473 AC.
T.A. WINTERS
1085-602
35.16 AC

574-53
B.M. LOVELAND
382-602
325-97
37.35 A
RE. KRAYKA
982-775
1096-1173
L.D. & K.E. KIRBY
764-365
5.00 AC

607-254 1.058 AC
D.B. LOVELAND
607-941 1.23 AC
D. VAKOHAS
B. LOVELAND
607-943 1.805 AC
B. NOSSE
983-117
3.22 AC
858-965
752-778
982-989
S.L. BURKETT
J.A. & B.L. KRAYKA
880-748 3 AC

39.08 A.
D.M. & G.M. SLIVKA
1038-284
794-924
W.I.S. RONZEL
4 AC
7.73 AC
B. OMIECINSKI
PARCEL #2
11.54 AC
976-538
B.J. POWELL
119-142
PARCEL #1
6.37 AC

647-801
4.26 A
J. & C. DRACE
316-388
1030-412
T.H. GROGAN
701-1391
5 A
R.A. EVANS
706-629
480 A
T.R. SILBAUGH
706-629
480 A
D.E. RIGGINS
492-976 (SCT)
1063
M.F. STARRALL
385
1063

558.25'
D.M. & G.M. SLIVKA
38.25 AC
924-1027
W.I.S. RONZEL
4 AC

794-924
W.I.S. RONZEL
4 AC
4.0 WILSON
702-604
39.08 A.
D.M. & G.M. SLIVKA
1038-284
794-924
W.I.S. RONZEL
4 AC
4.0 WILSON
702-604
39.08 A.
D.M. & G.M. SLIVKA
1038-284
794-924
W.I.S. RONZEL
4 AC

5.73 AC
B. OMIECINSKI
PARCEL #2
11.54 AC
976-538
B.J. POWELL
119-142
PARCEL #1
6.37 AC

4.0 WILSON
702-604
39.08 A.
D.M. & G.M. SLIVKA
1038-284
794-924
W.I.S. RONZEL
4 AC

4.0 WILSON
702-604
39.08 A.
D.M. & G.M. SLIVKA
1038-284
794-924
W.I.S. RONZEL
4 AC

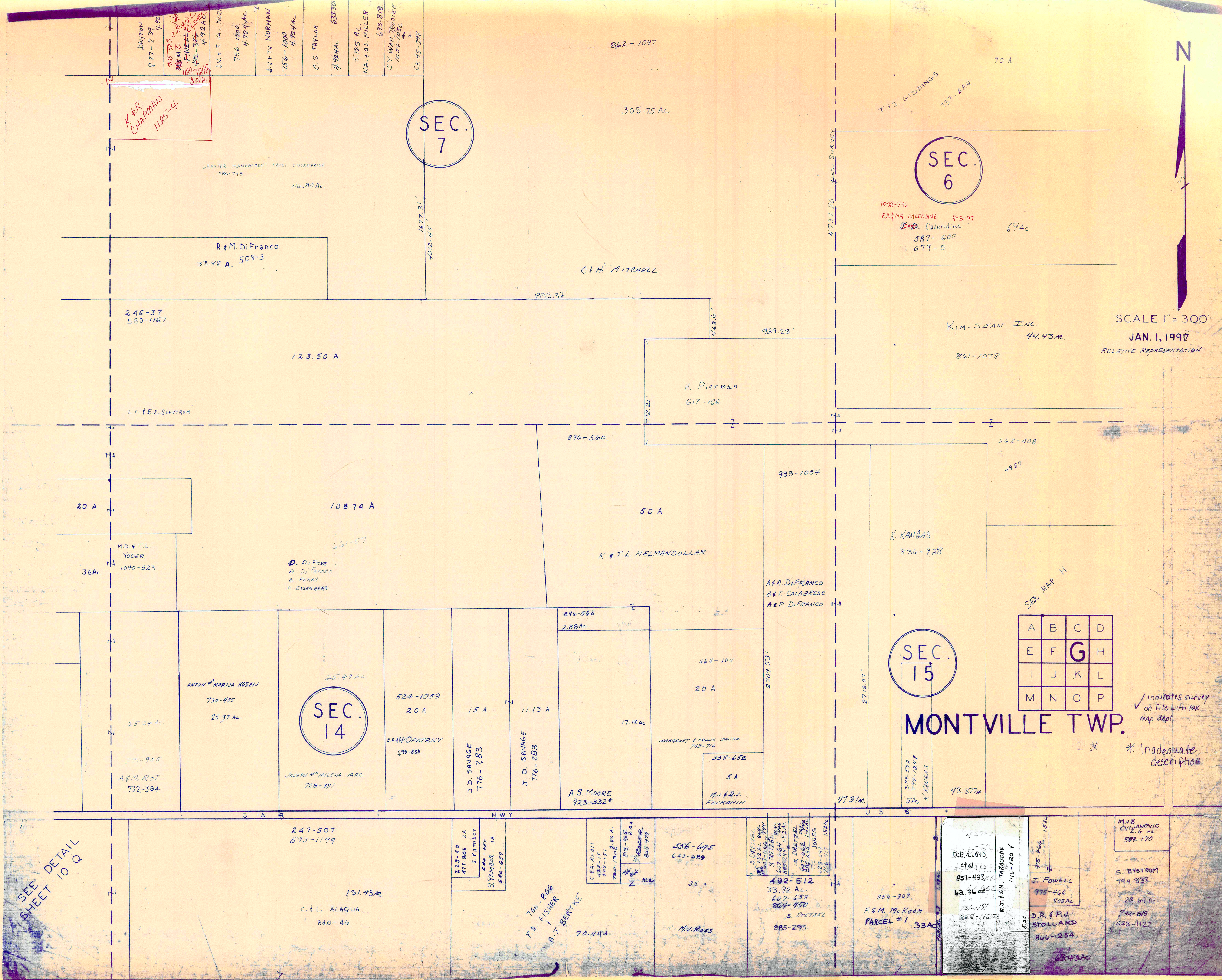
4.0 WILSON
702-604
39.08 A.
D.M. & G.M. SLIVKA
1038-284
794-924
W.I.S. RONZEL
4 AC

4.0 WILSON
702-604
39.08 A.
D.M. & G.M. SLIVKA
1038-284
794-924
W.I.S. RONZEL
4 AC

4.0 WILSON
702-604
39.08 A.
D.M. & G.M. SLIVKA
1038-284
794-924
W.I.S. RONZEL
4 AC



SCALE 1" = 300'
JAN. 1, 1997
RELATIVE REPRESENTATION



K.E.R. CHAPMAN
1185-4

SEC. 7

SEC. 6

1098-796
R.A. & M.A. CALENDINE 4-3-97
J.D. CALENDINE
587-600
679-5

GREATER MANAGEMENT TRUST ENTERPRISE
1986-745
116.80 Ac.

R.M. DiFranco
33.48 A. 508-3

C.H. MITCHELL

246-37
590-1167

123.50 A

929.28'

KIM-SEAN INC.
44.43 Ac.
861-1078

H. Pierman
617-166

L. & E.E. SCHUTZMAN

20 A

108.74 A

50 A

MD & T.L. YODER
1040-523
35Ac.

D. DI FIORE
A. DI FRANCO
B. FERRI
F. EISENBERG

K. & T.L. HELMANDOLLAR

K. KANGAS
836-928

A.A. DiFRANCO
B.T. CALABRESE
A.P. DiFRANCO

A	B	C	D
E	F	G	H
I	J	K	L
M	N	O	P

SEC. 15

MONTVILLE TWP.

/ indicates survey on file with tax map dept.

* inadequate description

SEC. 14

ANTON M. MARUJA KOZEL
730-425
25.37 Ac.

524-1059
20 A

15 A

11.13 A

25.24 Ac.

571-905
A.E.M. ROT
732-384

JOSEPH M. MILENA JARC
728-391

SAWA OPATRYNY
690-888

J.D. SAVAGE
776-283

J.D. SAVAGE
776-283

A.S. MOORE
923-332

MARGARET E. FRANK DENTON
713-716

558-682

M.J. & D.J. FECKANIN

47.37 Ac.

43.37 Ac.

SEE DETAIL SHEET 10 Q

247-507
573-1199

131.43 Ac.
C.L. ALAQUA
840-46

223-40
471-806
S.Y. Ambor
644-447
S.Y. AMBOR JA
644-657

766-866
P.A. FISHER
A.J. BERTKE
70.44 A

556-695
643-689

35 A

492-512
33.92 Ac.
607-658
864-450
S. DYETZEL
885-295

454-307
F & M. McKeon
PARCEL #1
33Ac.

4127-7
D.B. CLOYD
C.A.
851-433
62.36 Ac.
751-1191
822-1100

J. POWELL
975-466
405 Ac.

D.R. & P.D. STOLLARD
866-1254

M.V.B. CIVILANOVIC
2.6 Ac.
589-170

S. BYSTROM
794-838
23.64 Ac.

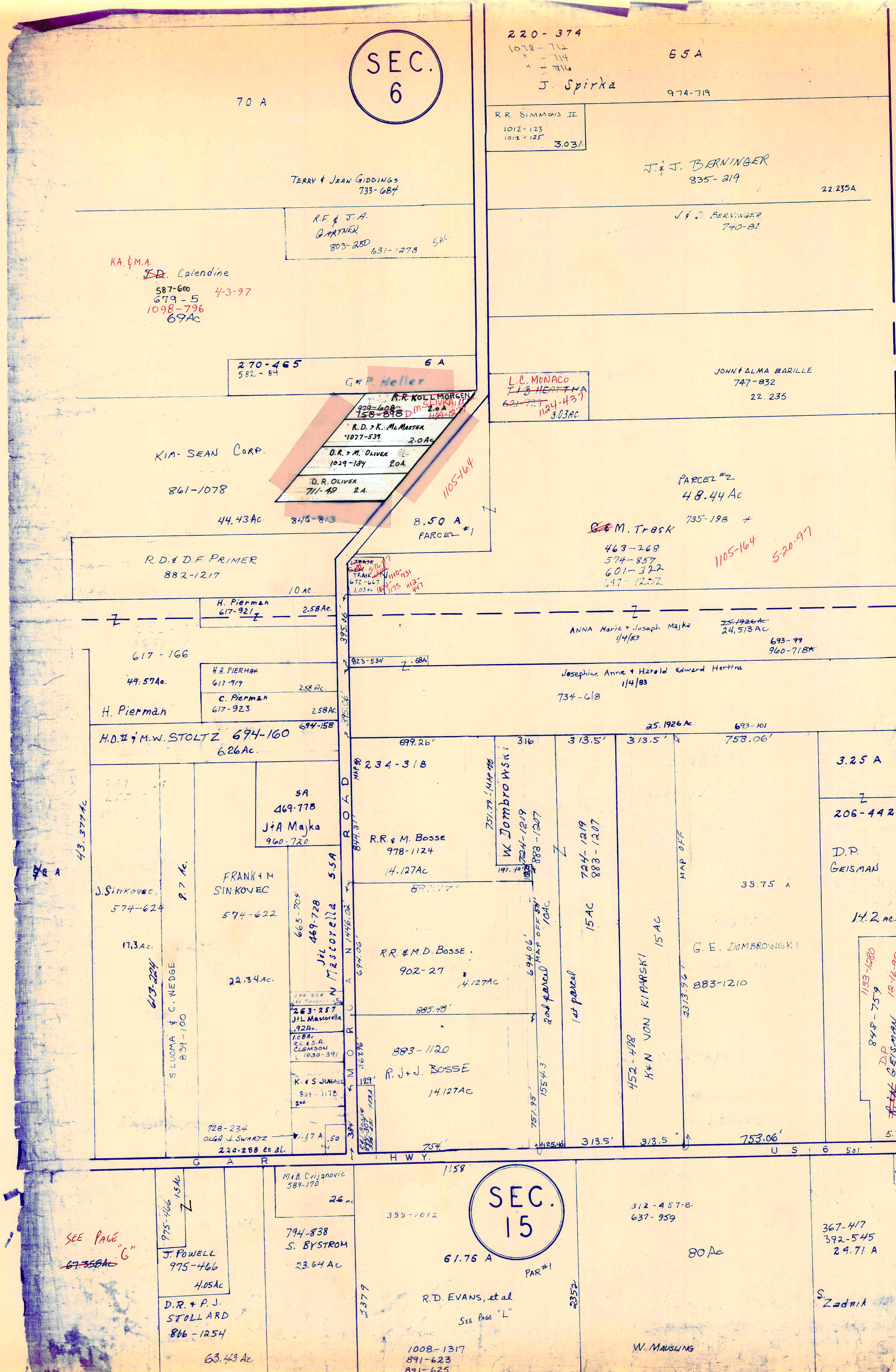
732-819
623-1122

63.43 Ac.

SEC. 6

SEC. 15

A S H T A B U L A C O U N T Y



SCALE 1" = 300'

✓ indicates survey on file with tax map dept.

* Inadequate description

JANUARY 1, 1997
RELATIVE REPRESENTATION

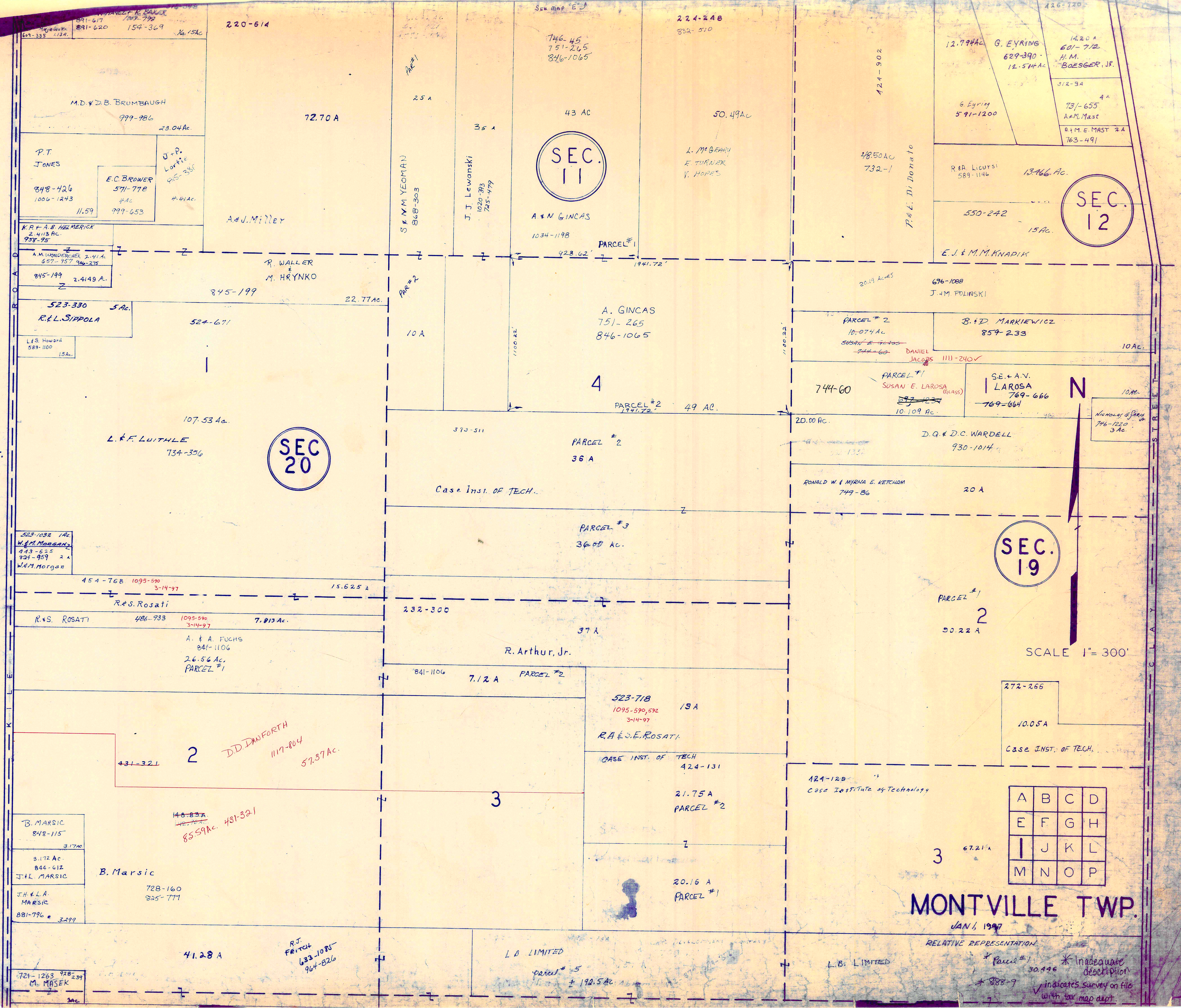
A	B	C	D
E	F	G	H
I	J	K	L
M	N	O	P

MONTVILLE TWP

SEE PAGE "G"
67-558 AC

8P
A. LOZAN & R. KOZAL
444-593, 595
512-597, 599
1103-661, 1103-265

H A M B D E N T O W N S H I P



SEC 20

SEC 11

SEC 12

SEC 19

A	B	C	D
E	F	G	H
I	J	K	L
M	N	O	P

MONTVILLE TWP.

JAN 1, 1997

RELATIVE REPRESENTATION

* Parcel #1 30.946
 * Inadequate description
 * 888-9 indicates survey on file with tax map dept.

SCALE 1" = 300'

PARCEL #1
 220-614
 23.04 Ac.
 154-369
 No. 15 Ac.

224-248
 332-510
 50.49 Ac.

12.794 Ac
 G. EYRING
 629-390
 12.574 Ac.

P.T. JONES
 848-426
 1006-1243
 11.59
 E.C. BROWER
 571-778
 4 Ac.
 999-653
 4.41 Ac.

A & N GINCAS
 1034-1198
 43 AC

R.A. LICURSI
 589-1146
 13.466 Ac.

K.R. & A.B. HELMERICK
 2.4113 Ac.
 938-95

A. & J. MILLER

550-242
 15 Ac.

A.M. WUNDERLICH
 2.411 Ac.
 887-957
 946-275

R. WALLER & M. HRYNKO

E.J. & M.M. KNAPIAK

845-199
 2.4149 Ac.

845-199
 22.77 Ac.

20.19 Acres
 676-1088
 J.M. POLINSKI

523-330
 R.L. SIPPOLA
 5 Ac.

523-330
 524-671
 22.77 Ac.

PARCEL #2
 10-874 Ac.
 SUSAN E. LAROSA
 744-60

B. & D. MARKIEWICZ
 859-233
 10 Ac.

L.E.S. HOWARD
 589-1100
 15 Ac.

107-53 Ac.
 L. & F. LUTHLE
 734-356

A. GINCAS
 751-265
 846-1065
 49 AC.

DANIEL JACOBS
 1111-240

SE. & A.V. LAROSA
 769-666
 769-664
 10.109 Ac.

523-1032 1 Ac.
 W.M. MORGAN
 443-625
 921-959 2 Ac.
 W.M. Morgan

Case Inst. OF TECH.
 36 A

744-60
 10.109 Ac.

SE. & A.V. LAROSA
 769-666
 769-664
 10.109 Ac.

454-768 1095-590
 3-14-97
 R.S. ROSATI

15.625 A

20.00 Ac.
 D.Q. & D.C. WARDELL
 930-1014

RONALD W. & MYRNA E. KETCHUM
 749-86
 20 A

R.S. ROSATI
 486-933
 1095-590
 3-14-97
 7.813 Ac.

232-300
 37 A

PARCEL #1
 50.22 A

Case Inst. OF TECH.
 10.05 A

A. & A. FUCHS
 841-1106
 26.56 Ac.
 PARCEL #1

841-1106
 7.12 A
 PARCEL #2

20.22 A

Case Inst. OF TECH.
 10.05 A

431-321
 2
 D.D. DANFORTH
 1117-804
 57.37 Ac.

523-718
 1095-590, 592
 3-14-97
 19 A
 R.A. & S.E. ROSATI

Case Inst. OF TECH
 424-131

Case Inst. OF TECH.
 424-131

B. MARSIC
 848-115
 3.172 Ac.

21.75 A
 PARCEL #2

20.16 A
 PARCEL #1

Case Inst. OF TECH.
 424-131

3.172 Ac.
 844-612
 J.H. & L.A. MARSIC

728-160
 825-771
 B. Marsic

184-129
 Case Institute of Technology

3
 67.21 A

J.H. & L.A. MARSIC
 881-796
 3.299

41.28 A
 R.J. Ferris
 633-1085
 964-826

L.B. LIMITED

L.B. LIMITED

721-1263 928-239
 M. MASEK
 3 Ac.

L.B. LIMITED
 Parcel # 5
 192.5 Ac.

L.B. LIMITED

L.B. LIMITED

SEC. 12

SEC. 13

SEC. 19

SEC. 18

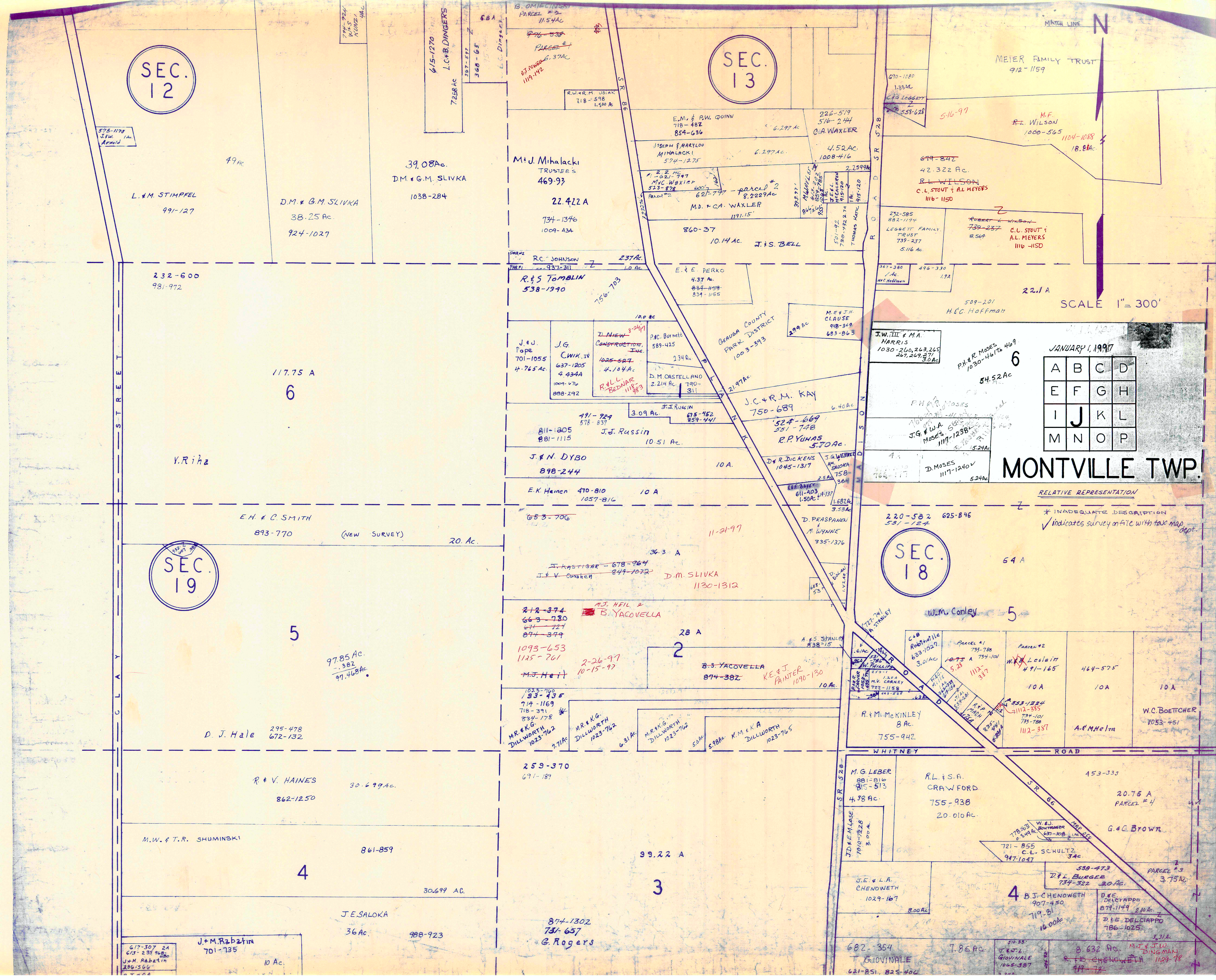
JANUARY 1, 1997

A	B	C	D
E	F	G	H
I	J	K	L
M	N	O	P

MONTVILLE TWP.

SCALE 1" = 300'

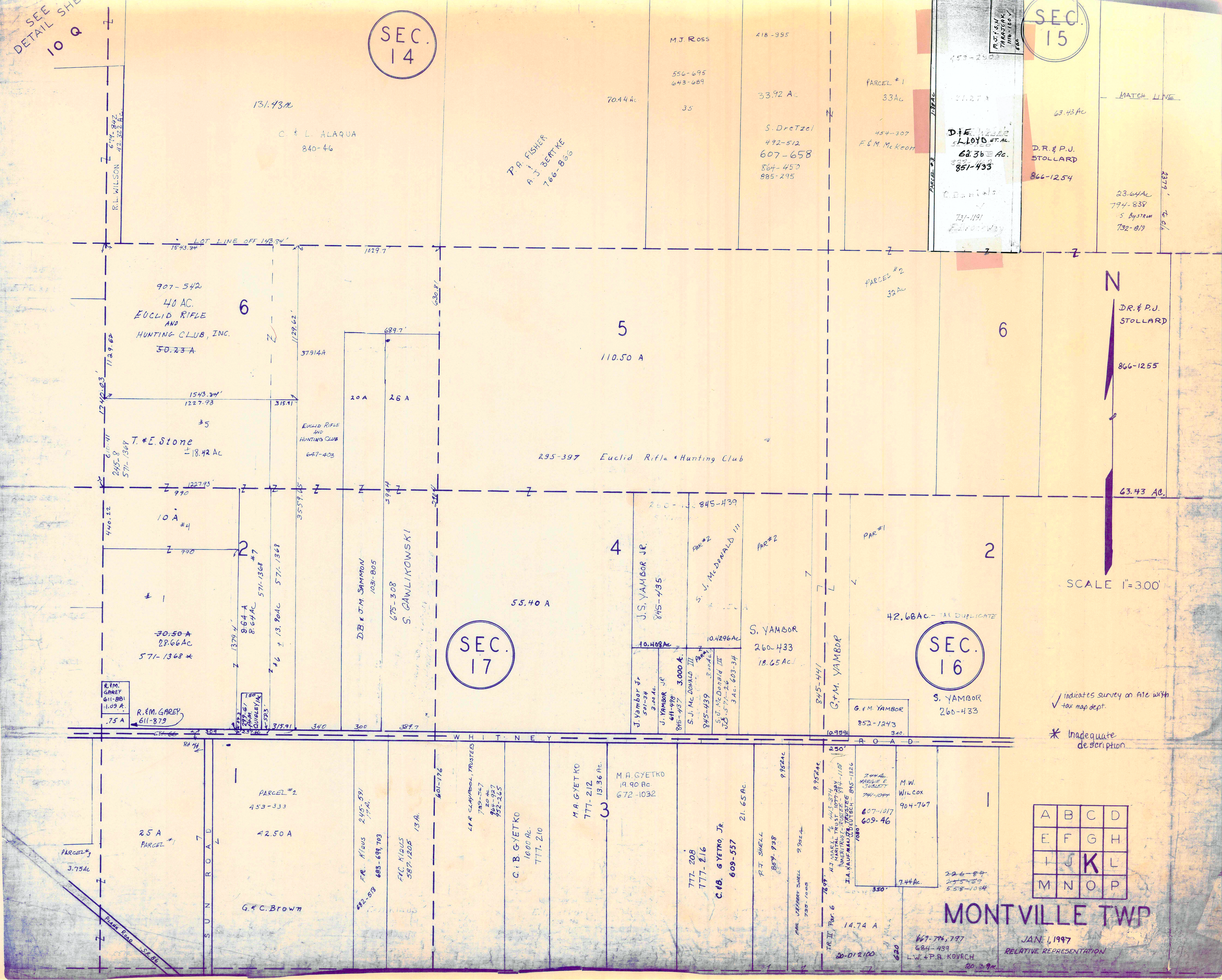
RELATIVE REPRESENTATION
 * INADEQUATE DESCRIPTION
 ✓ indicates survey on file with tax map dept.



SEE
DETAIL SHEET
10 Q

SEC.
14

SEC.
15



✓ indicates survey on file with tax map dept.

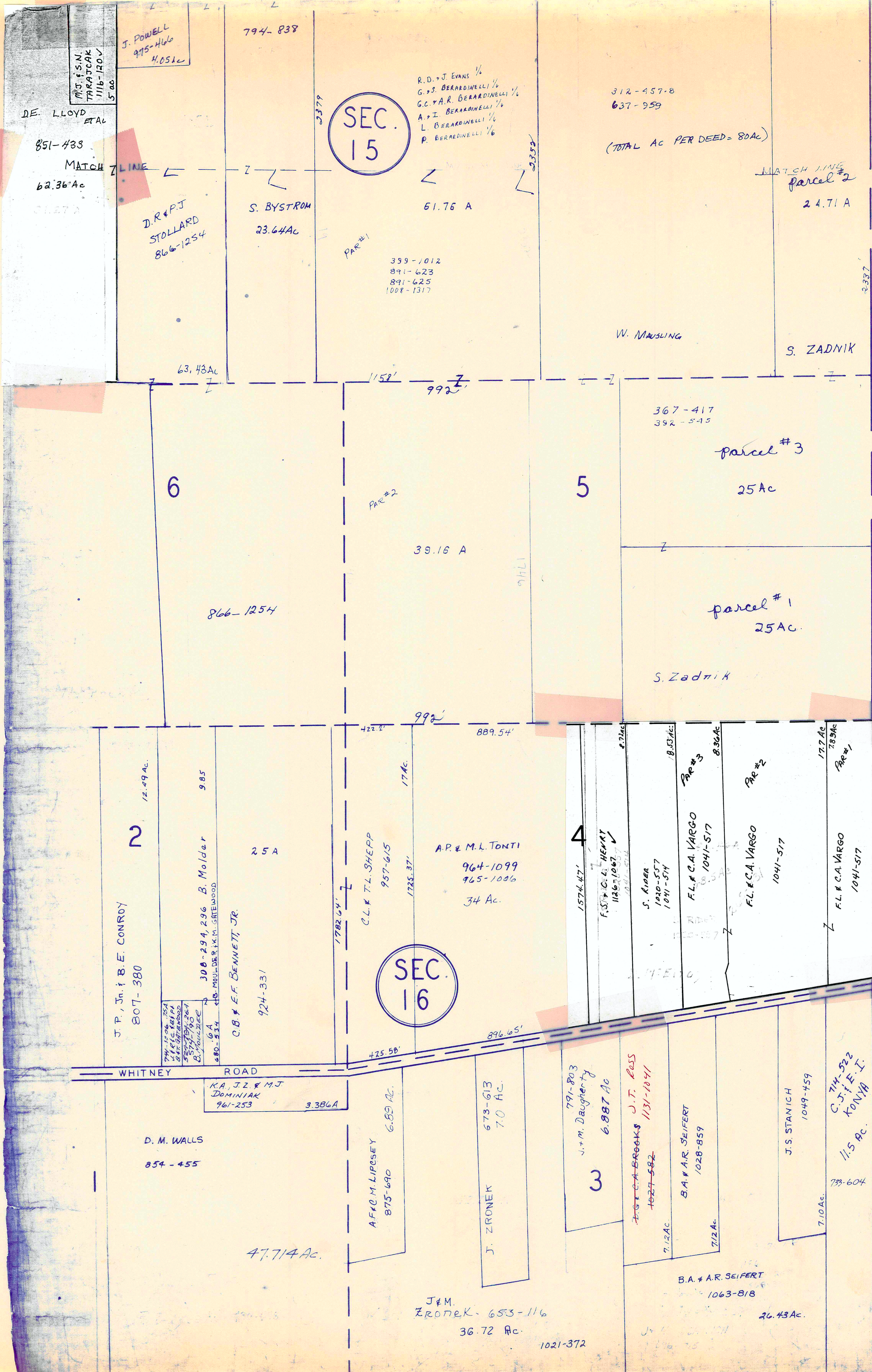
* Inadequate description

A	B	C	D
E	F	G	H
I	J	K	L
M	N	O	P

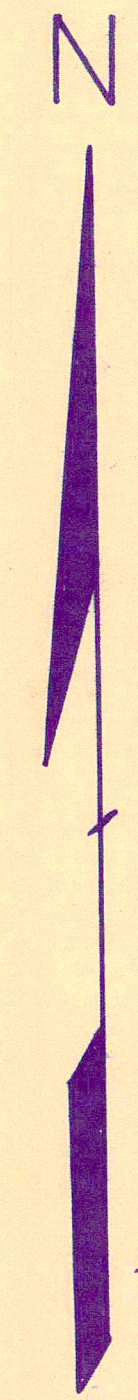
MONTVILLE TWP

JAN. 1, 1997
RELATIVE REPRESENTATION

667-776, 777
684-439
L.W. + P.A. KOVRCH
20.29A



A S H T A B U L A C O U N T Y



✓ indicates survey on file with tax map dept.

* Inadequate description

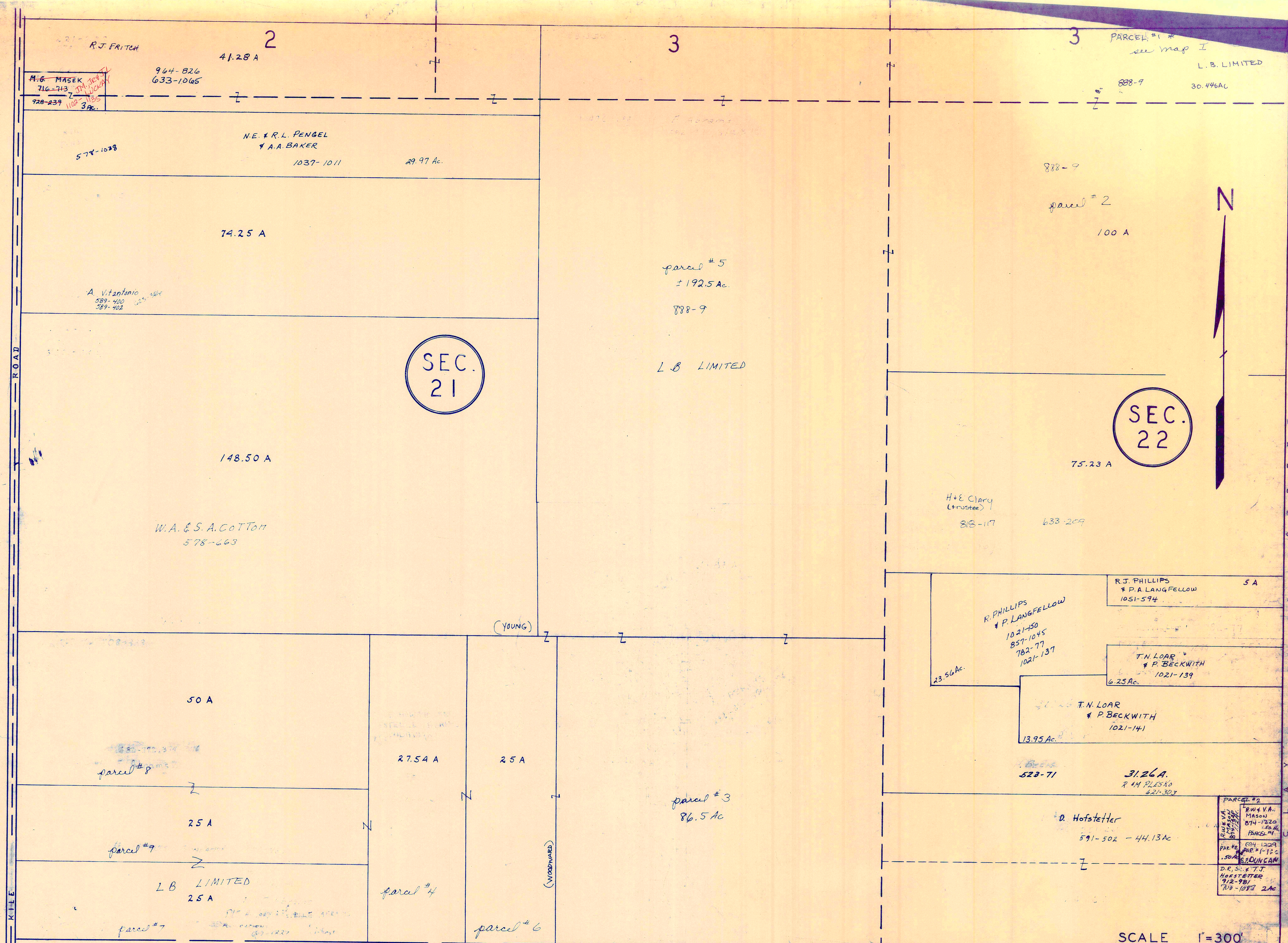
SCALE 1"=300'
JAN. 1, 1997.

A	B	C	D
E	F	G	H
I	J	K	L
M	N	O	P

RELATIVE REPRESENTATION

MONTVILLE TWP.

H A M B D E N T O W N S H I P



SEC. 21

SEC. 22



SCALE 1"=300'

H U N T S B U R G T O W N S H I P

JAN. 1, 1997
RELATIVE REPRESENTATION

A	B	C	D
E	F	G	H
J	K	L	
M	N	O	P

MONTVILLE TWP

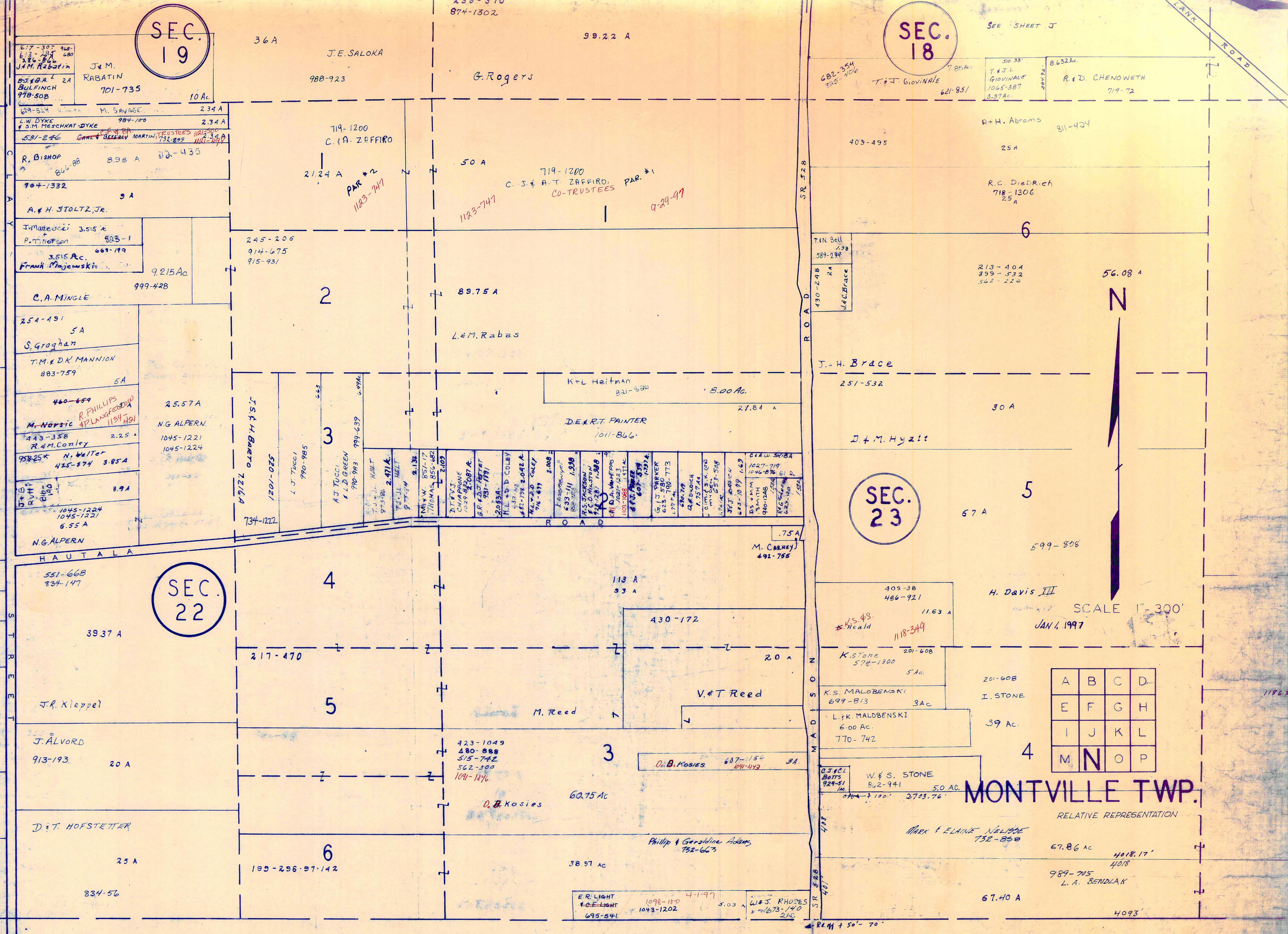
Indicates survey or file with tax map dept.
* Inadequate description

SEC. 19

SEC. 18

SEC. 23

SEC. 22



SEE SHEET J



SCALE 1" = 300'

A	B	C	D
E	F	G	H
I	J	K	L
M	N	O	P

MONTVILLE TWP.

RELATIVE REPRESENTATION

H U N T S B U R G T O W N S H I P

* Inadequate description
 ✓ INDICATES SURVEY ON FILE WITH TAX MAP DEPT.

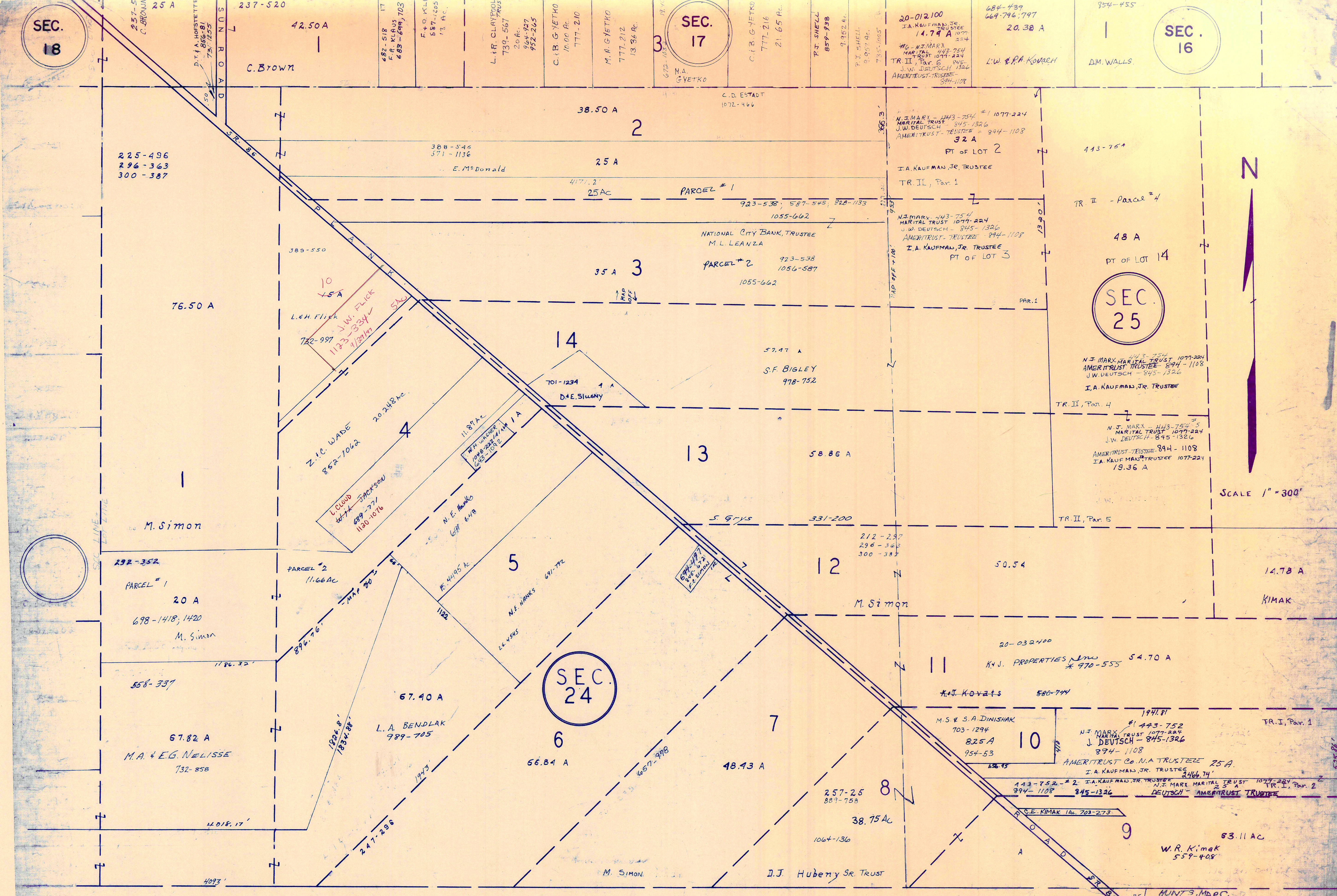
SEC. 18

SEC. 17

SEC. 16

SEC. 25

SEC. 24



N

SCALE 1" = 300'

H U N T S B U R G T O W N S H I P

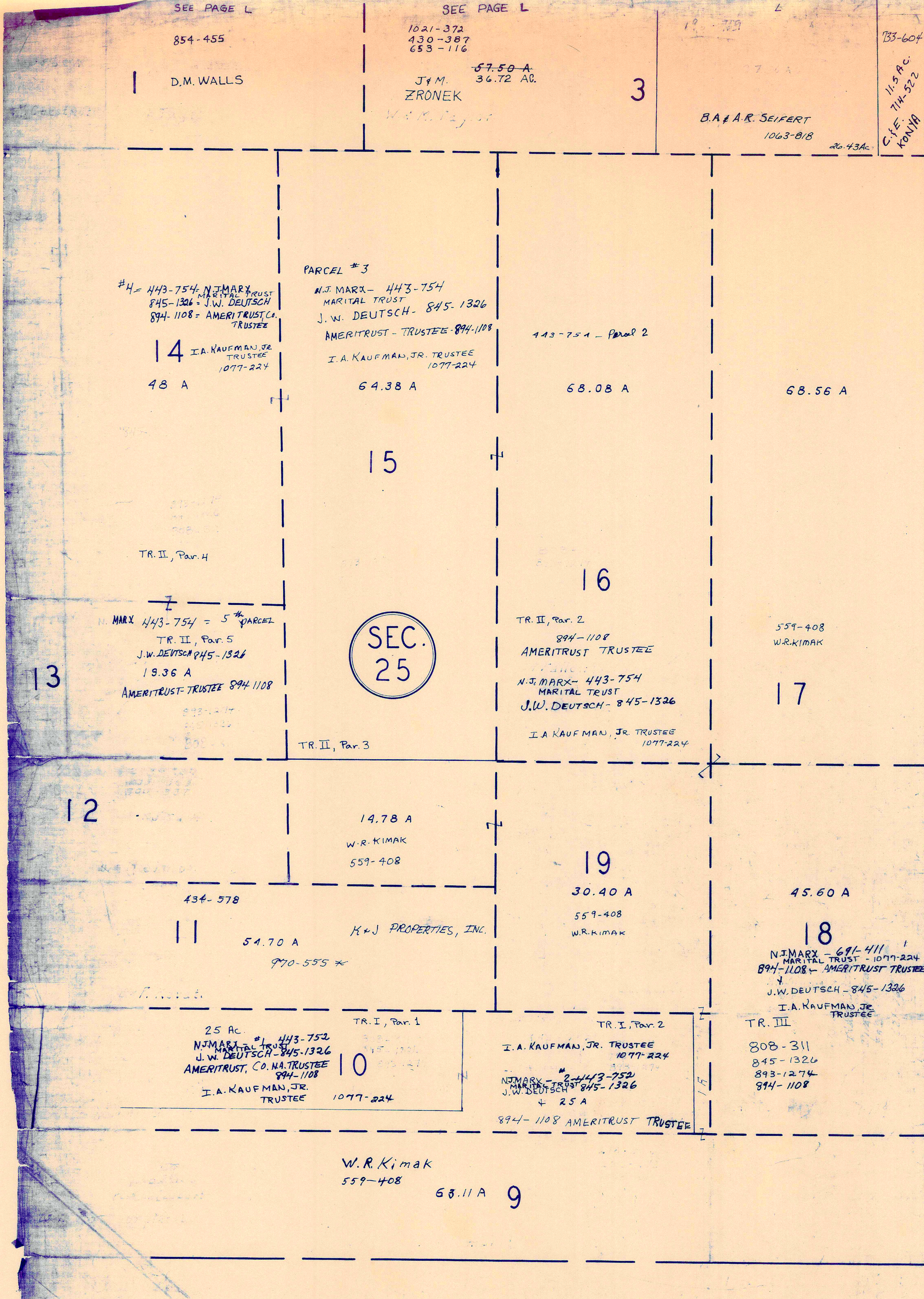
JAN 1, 1997
SCALE 1" = 300'

RELATIVE REPRESENTATION

A	B	C	D
E	F	G	H
I	J	K	L
M	N	O	P

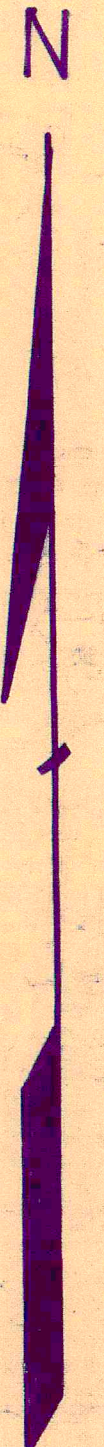
indicates survey on file with tax map dept.
* inadequate description

MONVILLE TWP



H
U
N
T
S
B
U
R
G
T
W
P.

A
S
H
T
A
B
U
L
A
C
O
U
N
T
Y



SCALE 1" = 300'

JAN 6, 1997

RELATIVE REPRESENTATION

✓ INDICATES SURVEY ON FILE WITH TAX MAP DEPT.

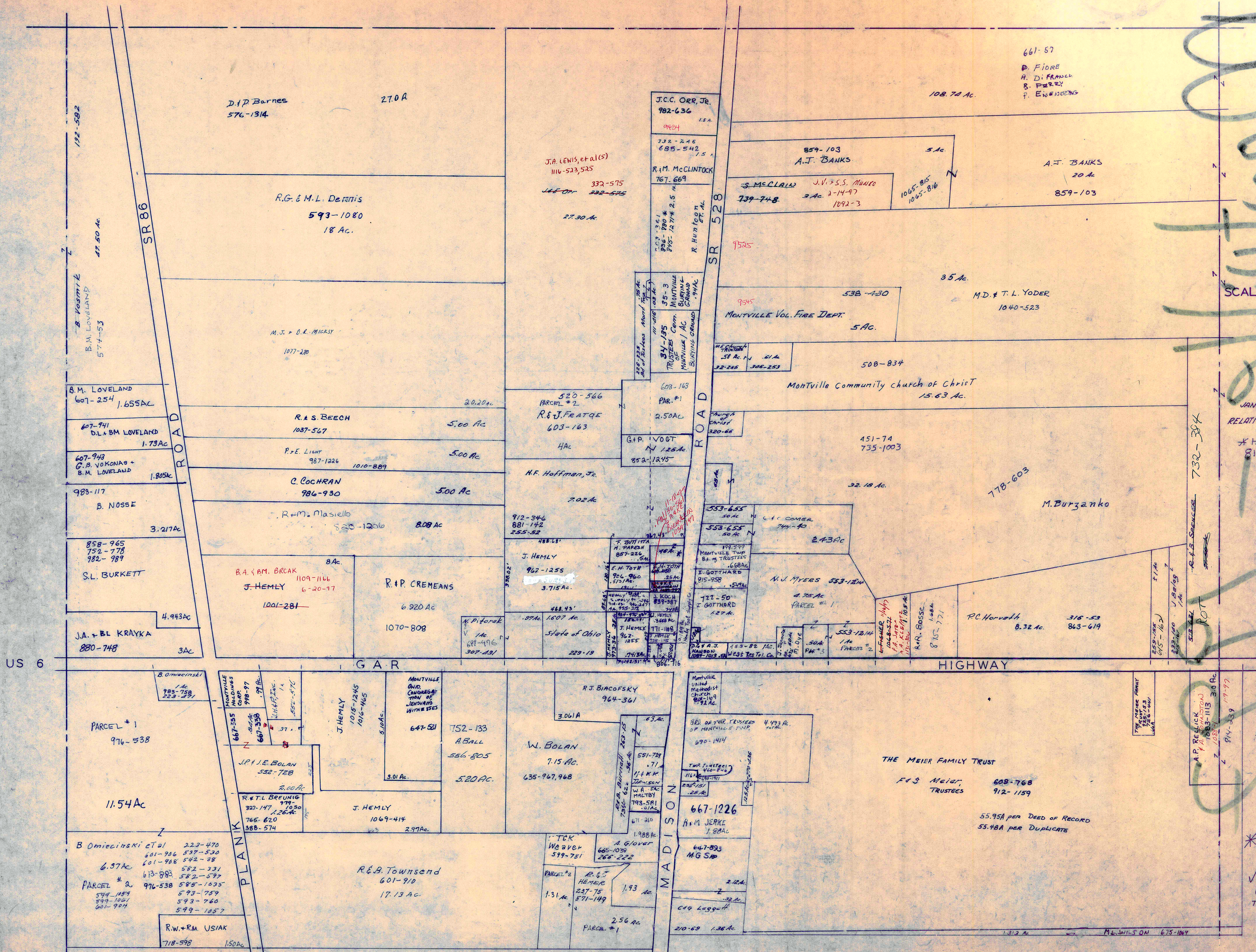
* Inadequate description

A	B	C	D
E	F	G	H
I	J	K	L
M	N	O	P

MONTVILLE TWP.

MONTVILLE SECTION 13

TWP



SCALE 1" = 200'

JANUARY 1, 1997
RELATIVE REPRESENTATION
* HOFFMAN ET AL
816-150
50Ac
40Ac
44Ac
39Ac

* inadequate description
✓ INDICATES SURVEY ON FILE WITH TAX MAP DEPT.